



# COMMERCE TOWER RETAIL SPACE

911 Main Street, Downtown Kansas City, Missouri



**LEASE RATE: \$13/SF NNN | 1,800 SF TO 3,200 SF SPACE**

#### DEMOGRAPHICS

	1 mile	3 miles	5 miles
Estimated Population	15,065	82,822	225,074
Avg. Household Income	\$87,803	\$69,397	\$76,006

- Central location in Downtown Kansas City
- Located in the lobby of Commerce Tower, home to 355 luxury high rise apartments, Park University, and Spectrum Station Daycare
- Walking distance to Kansas City Convention Center, T-Mobile, and Power & Light District
- Surrounded by office and residential buildings
- KC Streetcar stop immediately in front of building



CLICK HERE TO VIEW MORE LISTING INFORMATION

For More Information Contact:

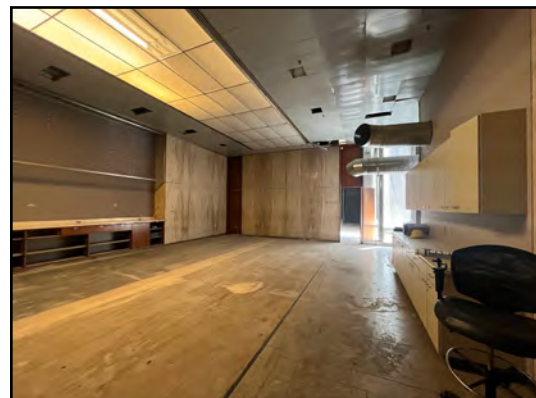
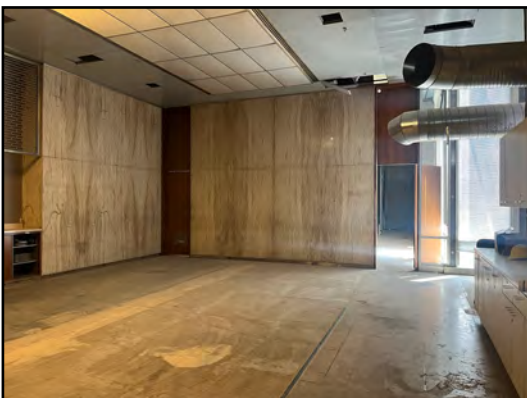
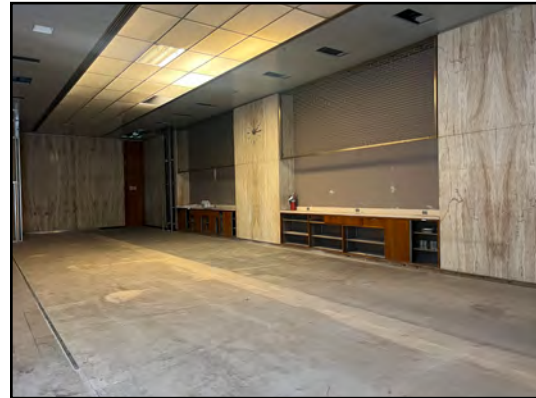
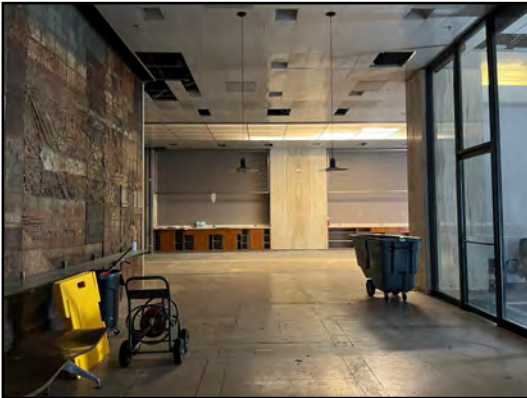
KARSYN SMITH | 816.412.7372 | [karsynsmith@blockandco.com](mailto:karsynsmith@blockandco.com)

DANIEL BROCATO | 816.412.7303 | [dbrocato@blockandco.com](mailto:dbrocato@blockandco.com)

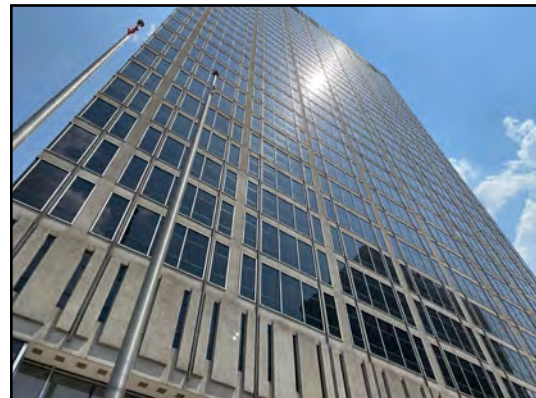
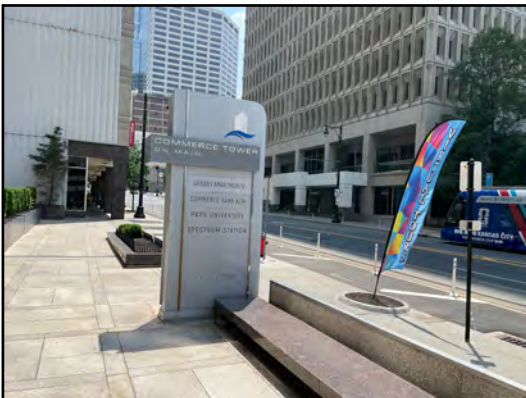
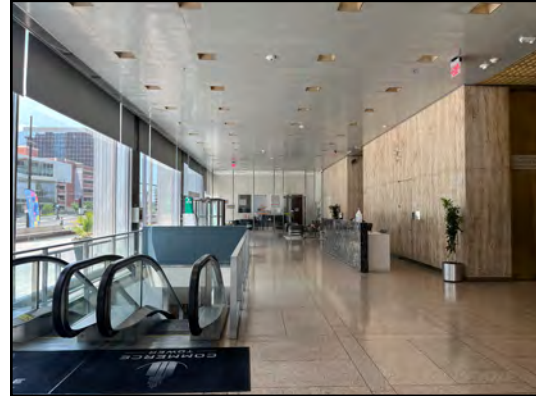
Exclusive Agents



## INTERIOR PHOTOS



## EXTERIOR PHOTOS





# COMMERCE TOWER RETAIL SPACE

911 Main Street, Downtown Kansas City, Missouri

## LUXURY APARTMENT AMENITIES

24-Hour Fitness Center

Automated Parcel Service

Basketball Court

Business Center

Central Air

Clubhouse

Coffee & Tea Bar

Controlled Access

Dedicated Streetcar Stop

Elevator Access

Firepit Area

Free Wi-Fi in Common Areas

Front Desk Concierge

Garage Parking

Indoor Dog Park

KC Skywalk System

Off-Street Parking

On-Site Maintenance

On-Site Management Team

Outdoor Kitchen

Patio/Balcony

Picnic Area with BBQ Grills

Playground

Rooftop Pool & Terrace

Sauna

Smoke-Free Building

Stellar Views

Storage Units Available

Sundeck

Theatre Room





# COMMERCE TOWER RETAIL SPACE

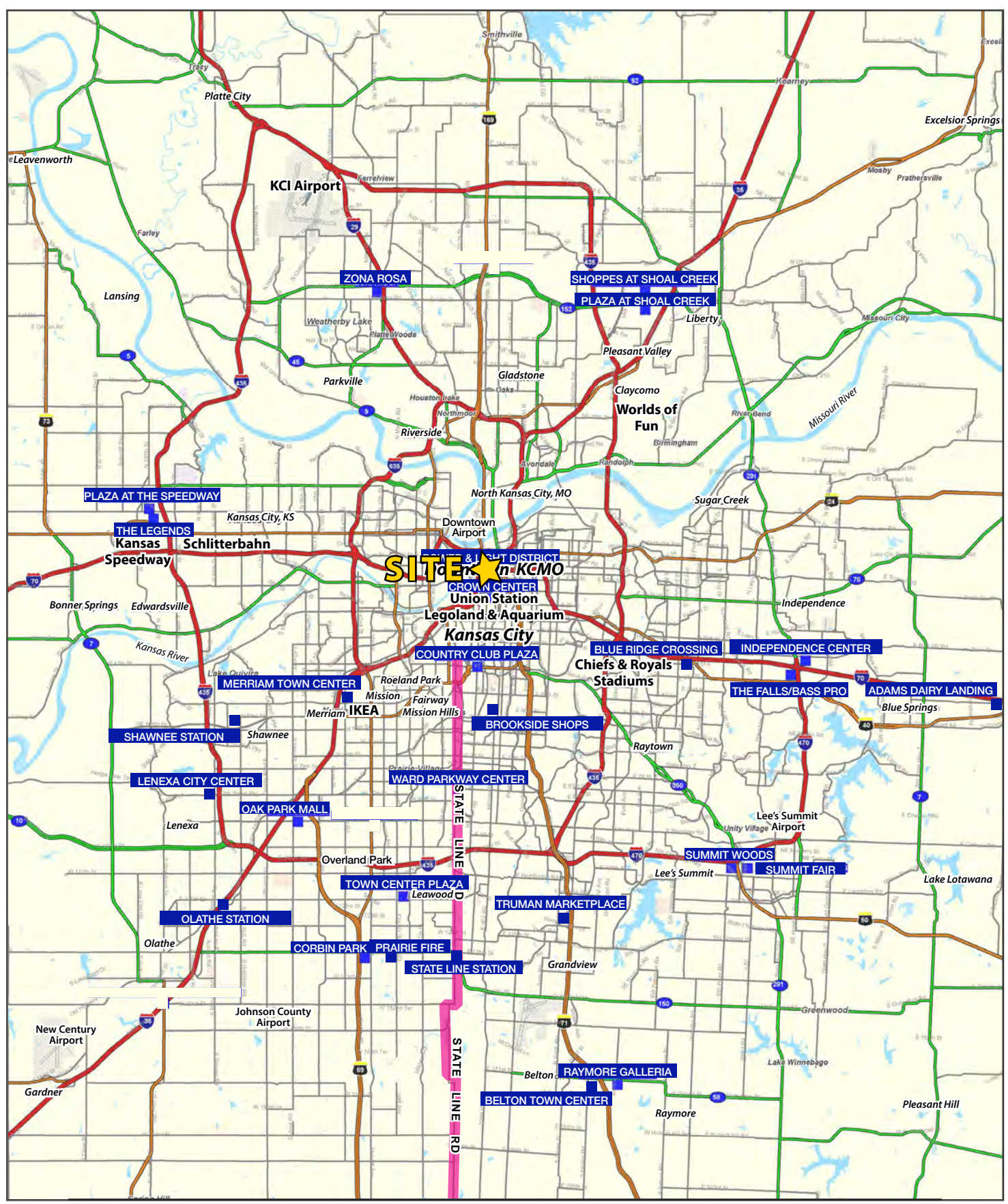
911 Main Street, Downtown Kansas City, Missouri

AERIAL



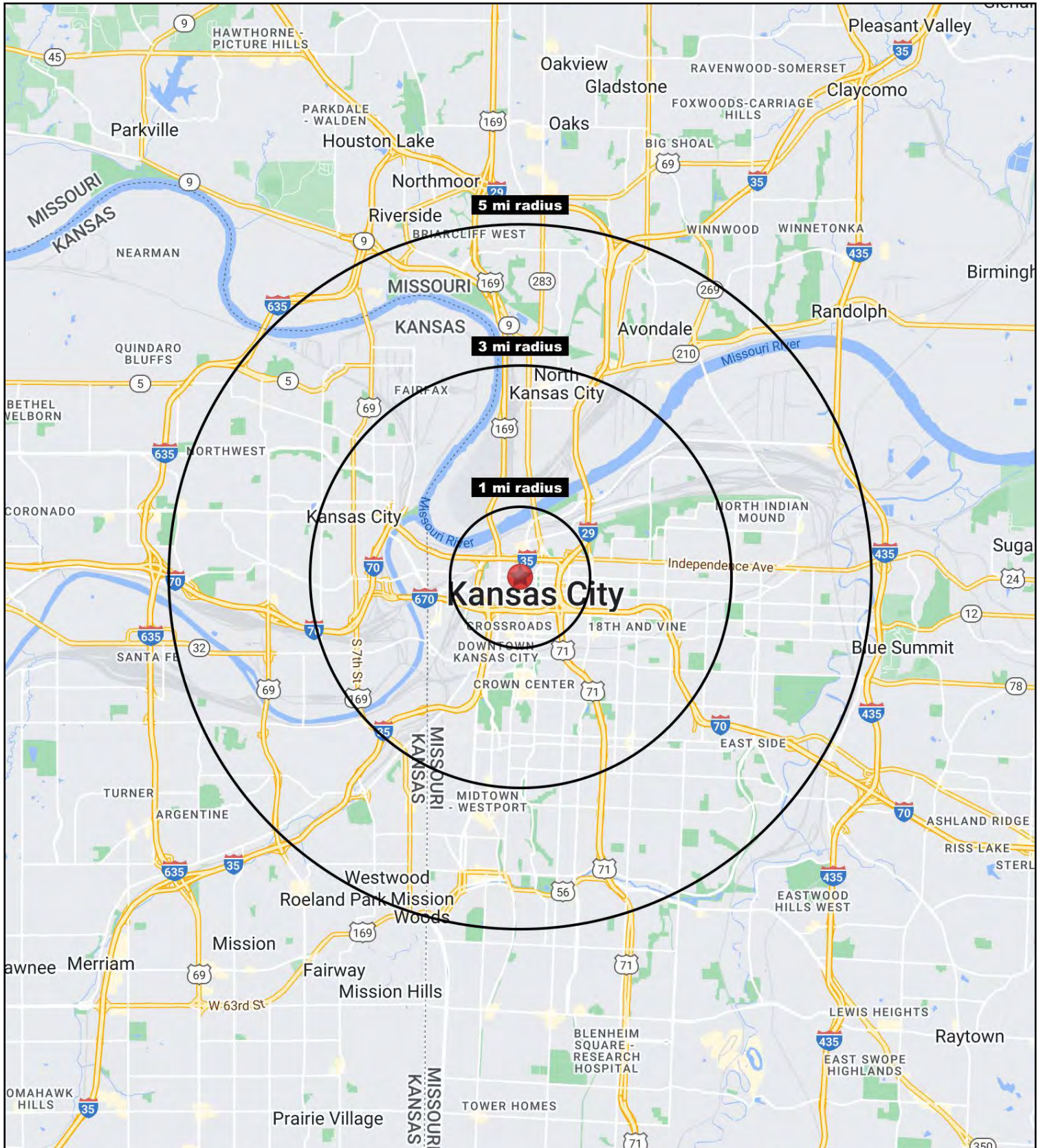
# COMMERCE TOWER RETAIL SPACE

911 Main Street, Downtown Kansas City, Missouri



# COMMERCE TOWER RETAIL SPACE

911 Main Street, Downtown Kansas City, Missouri





# COMMERCE TOWER RETAIL SPACE

911 Main Street, Downtown Kansas City, Missouri

911 Main Street Kansas City, MO 64105	1 mi radius	3 mi radius	5 mi radius
<b>Population</b>			
2023 Estimated Population	15,065	82,822	225,074
2028 Projected Population	14,981	84,619	228,699
2020 Census Population	15,492	83,215	224,602
2010 Census Population	10,321	73,037	211,376
Projected Annual Growth 2023 to 2028	-0.1%	0.4%	0.3%
Historical Annual Growth 2010 to 2023	3.5%	1.0%	0.5%
2023 Median Age	32.1	33.1	33.8
<b>Households</b>			
2023 Estimated Households	9,632	37,781	97,854
2028 Projected Households	9,449	38,042	98,372
2020 Census Households	9,756	37,494	96,564
2010 Census Households	5,380	30,712	88,124
Projected Annual Growth 2023 to 2028	-0.4%	0.1%	0.1%
Historical Annual Growth 2010 to 2023	6.1%	1.8%	0.8%
<b>Race and Ethnicity</b>			
2023 Estimated White	64.4%	44.3%	45.5%
2023 Estimated Black or African American	22.1%	30.9%	27.6%
2023 Estimated Asian or Pacific Islander	4.3%	5.2%	5.0%
2023 Estimated American Indian or Native Alaskan	0.5%	0.8%	0.8%
2023 Estimated Other Races	8.6%	18.8%	21.1%
2023 Estimated Hispanic	11.1%	22.5%	24.7%
<b>Income</b>			
2023 Estimated Average Household Income	\$87,803	\$69,397	\$76,006
2023 Estimated Median Household Income	\$76,536	\$55,066	\$56,566
2023 Estimated Per Capita Income	\$57,639	\$32,377	\$33,403
<b>Education (Age 25+)</b>			
2023 Estimated Elementary (Grade Level 0 to 8)	1.8%	7.4%	7.5%
2023 Estimated Some High School (Grade Level 9 to 11)	4.1%	8.4%	8.5%
2023 Estimated High School Graduate	14.5%	25.6%	27.8%
2023 Estimated Some College	16.0%	17.7%	18.4%
2023 Estimated Associates Degree Only	6.9%	6.3%	6.4%
2023 Estimated Bachelors Degree Only	35.6%	21.5%	19.4%
2023 Estimated Graduate Degree	21.1%	13.2%	11.8%
<b>Business</b>			
2023 Estimated Total Businesses	2,733	8,089	14,272
2023 Estimated Total Employees	39,449	123,588	202,843
2023 Estimated Employee Population per Business	14.4	15.3	14.2
2023 Estimated Residential Population per Business	5.5	10.2	15.8

©2023, Sites USA, Chandler, Arizona, 480-491-1112 Demographic Source: Applied Geographic Solutions 4/2023, TIGER Geography - RS1

